

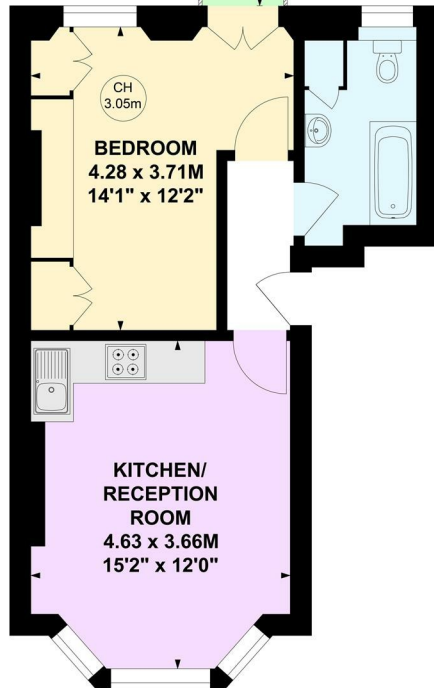
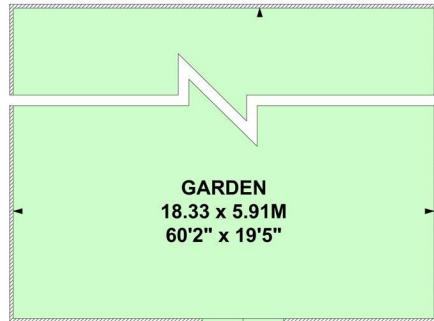
STURGES  
LONDON

Rostrevor Road, Fulham  
£2,150 Per calendar month

# Rostrevor Road, SW6

Approximate gross internal area  
37.04 sq m / 399 sq ft

Key :  
CH - Ceiling Height



## Ground Floor

This plan is not to scale and must be used as layout guidance only. All measurements and areas are approximate and should not be relied upon to provide accurate information. This plan must not be relied upon when making property valuations, design considerations or any other such relevant decisions. We accept no responsibility or liability (whether in contract, tort or otherwise) in relation to any loss whatsoever arising from or in connection with any use of this plan or the adequacy, accuracy or completeness of it or any information within it.

Energy Efficiency Rating		
	Current	Potential
Very energy efficient - lower running costs		
(92 plus) <b>A</b>		
(81-91) <b>B</b>		
(69-80) <b>C</b>		<b>76</b>
(55-68) <b>D</b>	<b>62</b>	
(39-54) <b>E</b>		
(21-38) <b>F</b>		
(1-20) <b>G</b>		
Not energy efficient - higher running costs		
<b>England &amp; Wales</b>	EU Directive 2002/91/EC	

**Local Authority:** London Borough of Hammersmith & Fulham  
**Council Tax Band:** D

**Lease:** Add text here  
**Service Charges:** Add text here  
**Ground Rent:** Add text here

## For more information, please contact:

(Tel) 020 3393 2002  
(Email) [hello@sturgeslondon.co.uk](mailto:hello@sturgeslondon.co.uk)

668 Fulham Road, Parsons Green, London, SW6 5RX

[sturgeslondon.co.uk](http://sturgeslondon.co.uk)

Agents Note: Whilst every care has been taken to prepare these particulars, they are for guidance purposes only. All measurements are approximate and for general guidance purposes only and whilst every care has been taken to ensure accuracy, they should not be relied upon and potential buyers/tenants are advised to recheck the measurements.